

● 用途 Applications

1. 适用于叠梁门、平面钢制闸门、平板格栅（网）等产品的起吊或放入。
2. 与钢绳和电动葫芦移动设施配套使用。
1. It can be adapted to lift stop log gate, flat steel gate, flat grate (grid) etc.
2. It can be used matched with steel cable and Electric hoist.

● 特点 Features

1. 抓落机构可以实现前后、左右方向自动抓落闸门或平板格栅（网）等，适用性强。
2. 可以实现单吊点，双吊点自动抓落。
3. 解决了深井格栅（网），闸门等设备的起吊脱钩问题。
4. 可在一机多孔和一孔多门等多种场合实现抓落。
1. The Auto Grab and Go Down Device can be widely used to auto grab gate and flat grate (grid) from directions of fore and after, left and right.
2. It can realize auto grabbing by one suspension centre or two.
3. It can lift flat grate (grid), gate etc, from deep well.
4. It can be adapted to multi situations that one device-multi holes and one hole-multi gate.

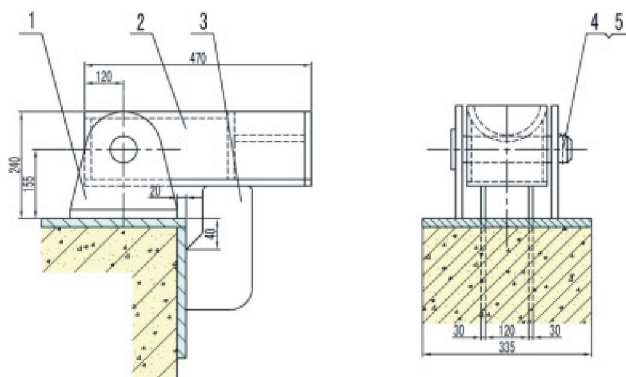
● 用途与外形 Applications and Outline

搁门器是为了放置开启后的钢闸门、格栅、格网等设备而设计的部件，是钢闸门、格栅格网等设备的配套部件，从5吨开始，每5吨一种规格，图示为10吨（即GM-10）

搁门器的使用限于平面钢闸门（或平板格栅、格网）不完全吊出导槽的场合，吊架应考虑足够的高度。

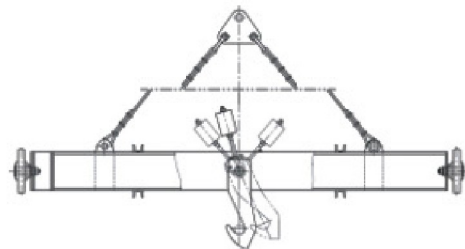
Placer is designed for placing open steel gate, grate, grid etc. It is matched equipment for them. There are various types of GM placer's from 5 ton and 5-ton is a grade. The drawing is about 10 ton (i.e. type GM-10).

The application of placer is limited in steel gate, grate and grid, not hanged out from guide slot completely. The height of the hanger must be enough.

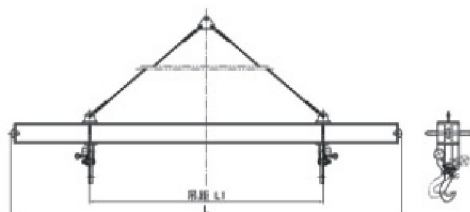


1、定位架 2、支撑架 3、承载板 4、开口销 5、销轴
GM-10(以带滚轮的钢闸门为例)

● 外形与安装尺寸表 Outline and Size



单吊点抓落机构



双吊点抓落机构



● 订货说明 Requirements for Order

1. 抓落机构与搁门器一般与我公司相关产品配套供货，若单独订货时，需提供详细的土建尺寸及设备联接尺寸。
2. 电动葫芦需要配套时请注明。
3. 请注明主体设备的材质。
1. Grasping agencies charged with door-linked companies in general and I related ancillary products available if separate orders; please provide details of the size and equipment connected civil size.
2. When electric hoist needs matching, please specify.
3. Please indicate the main equipment's materials.