

● 用途 Applications

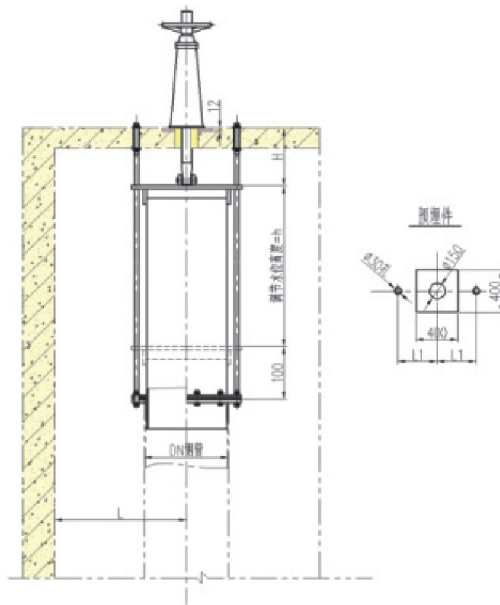
套筒阀主要用于污水处理厂的各类沉淀池中，用于排除池底的污泥，配手动或电动启闭机，通过调节排水套筒的升降，控制池内外的水位差，污泥通过自流从套筒上部溢出，通过调节套筒升降的幅度，从而控制沉淀池的排泥量大小。

Sleeve valve is mainly used for various types of sewage treatment plant settling tank, used to exclude the bottom of the sludge, with manual or electric hoist, lift by adjusting the drain sleeve to control the water level difference inside and outside pool, sludge overflow by gravity from the upper sleeve, the sleeve down by adjusting the rate to control the amount of sedimentation of mud size.

● 特点 Features

- | | |
|--------------|---|
| 1、结构简单，性能可靠； | 1、simple structure, reliable performance; |
| 2、安装方便，易于操作； | 2、easy to install, easy to operate; |
| 3、密封可靠，调节简便。 | 3、reliable sealing, easy adjustment. |

● 总体布置 General Layout



● 尺寸参数 Size Parameters

| 尺寸 \ 口径DN | DN150 | DN200 | DN300 | DN400 | DN500 | DN600 | DN700 |
|-----------|-------|-------|-------|-------|-------|-------|-------|
| L1 | 250 | 250 | 250 | 265 | 300 | 350 | 400 |
| Lmin | 300 | 300 | 300 | 320 | 350 | 400 | 450 |
| Hmin | ≥300 | ≥300 | ≥300 | ≥300 | ≥350 | ≥350 | ≥350 |

● 型号示例 Type and Its Indication

